

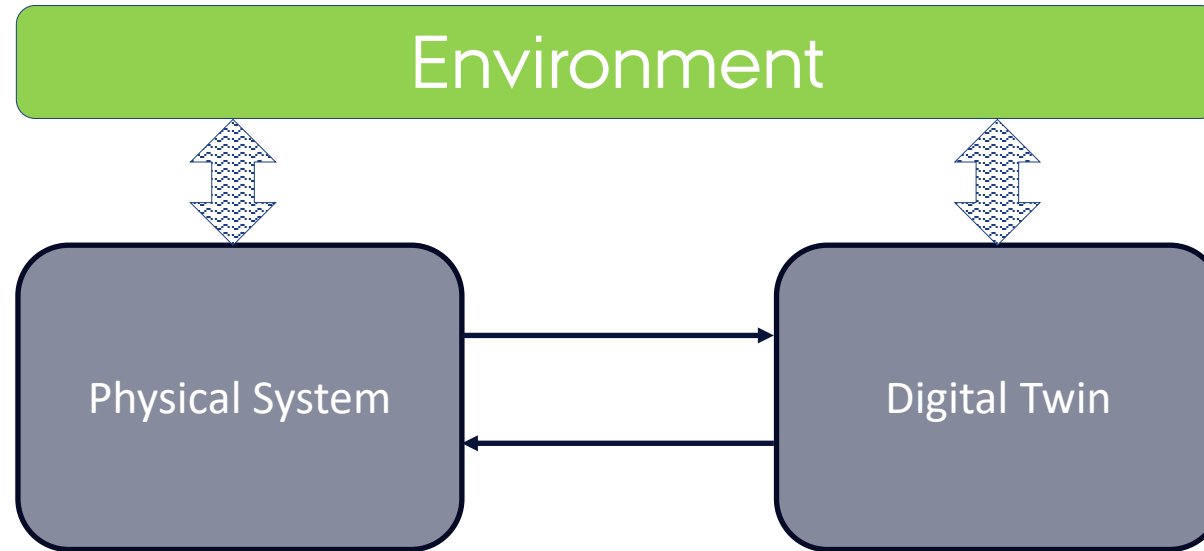
Digital Twin as a Service Software Platform

Prasad Talasila

prasad.talasila@ece.au.dk



WHAT IS A DIGITAL TWIN?



Adds value by enhancing the performance, or adding services.



What is **DTaaS**?

It is a platform to:

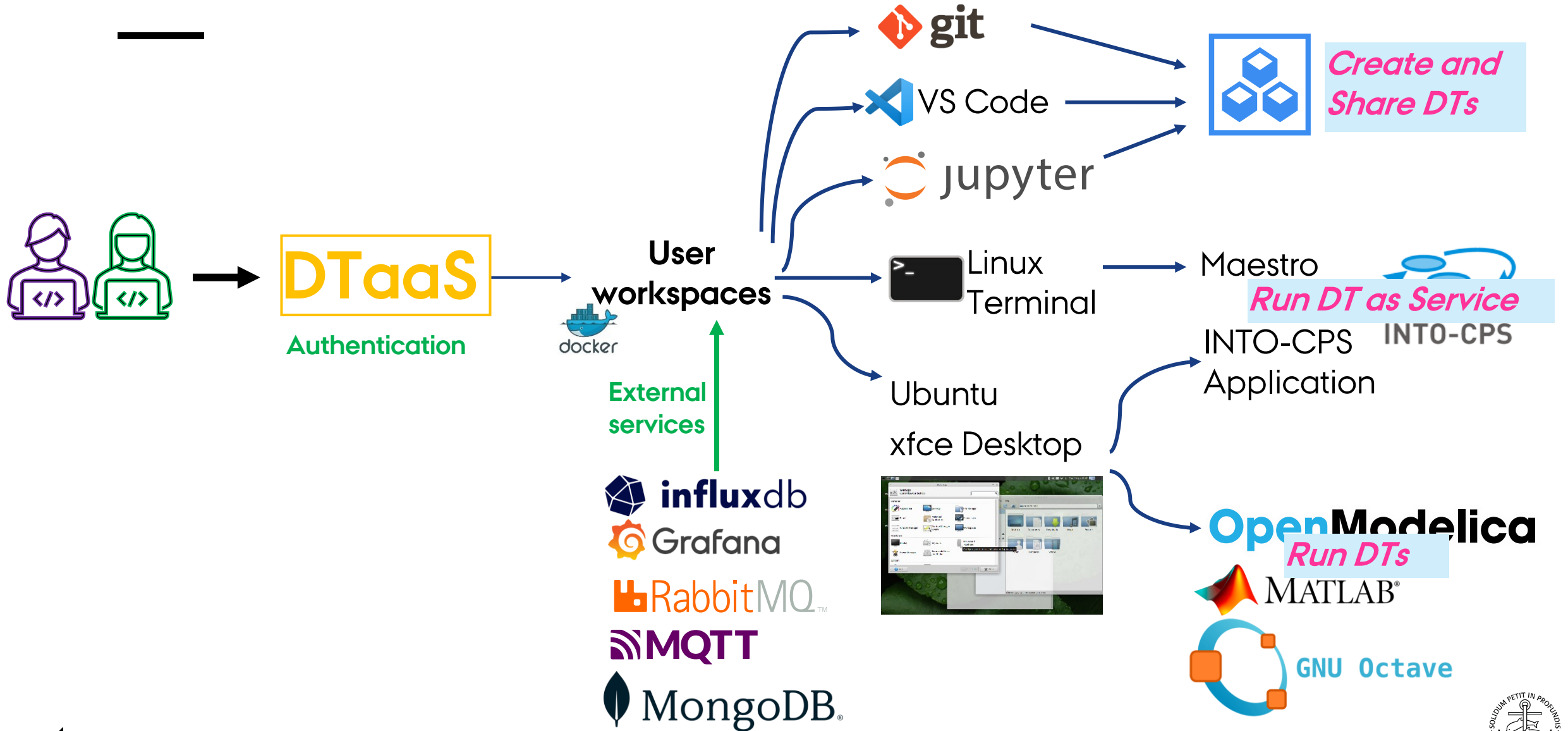
Create, Use, and Share Digital Twins

Run Digital Twins as Services

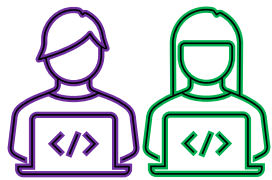
Provides private workspaces

Easy to use: familiar desktop environment

THE USER WORKSPACE



SCREENSHOTS OF A TYPICAL USER WORKSPACE



DTaaS
Authentication



User workspaces



External services



17 JANUARY 2024 | PRASAD SOFTW

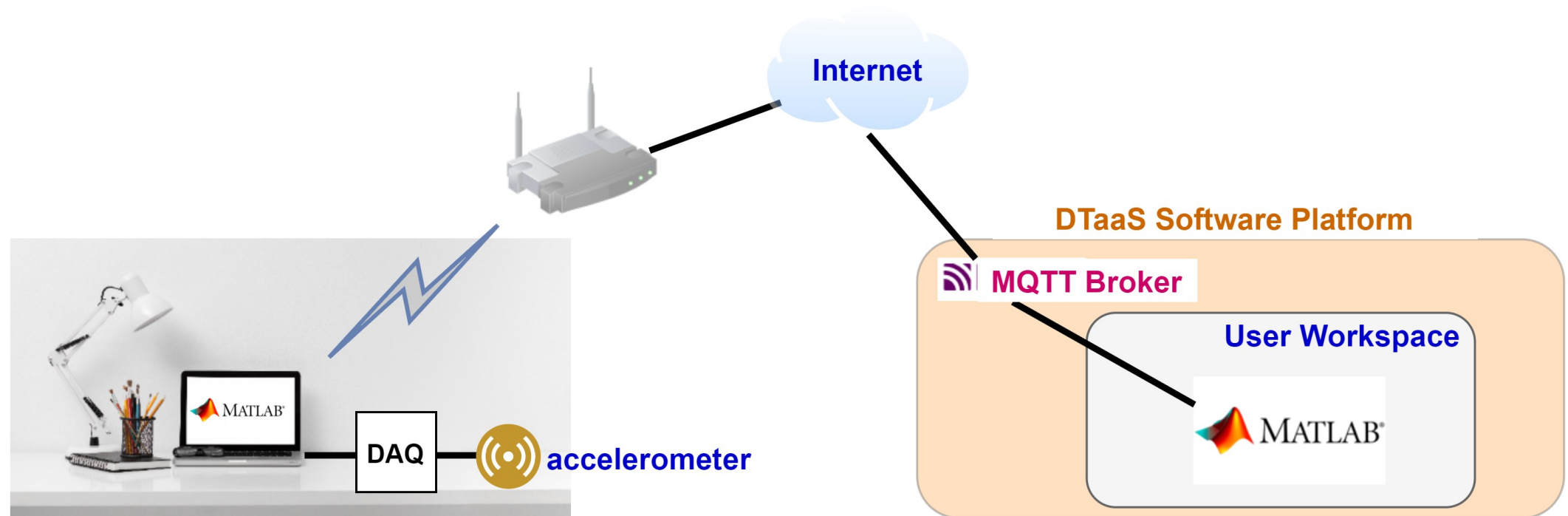
```
(base)
/workspace
└─ ls
   common  data  'digital twins'  functions  models  tools
(base)
/workspace
└─
```

*Linux Desktop with
Familiar Software
Development Tools*

```
(base)
/workspace
└─ ls
   common  data  'digital twins'  functions  models  tools
(base)
/workspace
└─
```

A Demo:

Digital Shadow of Desk



Source: <https://www.freepik.com>